

# **ROCKIN' frame stickers**

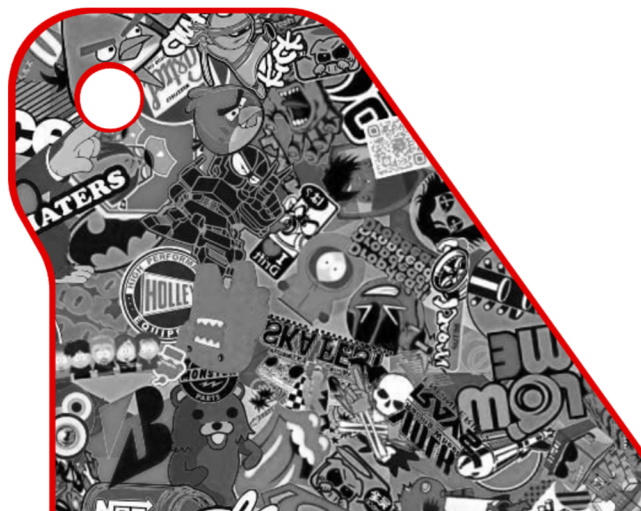
## **APPLICATION MANUAL**

### **Tips:**

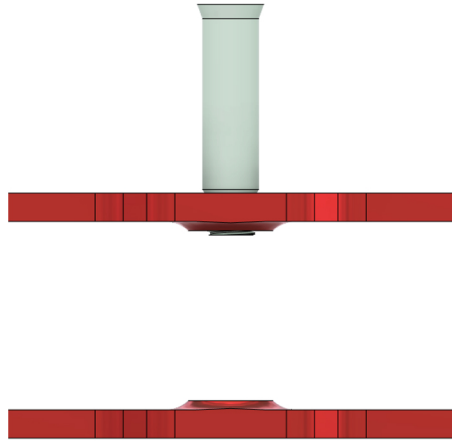
- Before sticker application, please remove all the axles from the frames and make sure that the surface of each frame is clean;
- After final sticker application a hair dryer can be used to heat the sticker up and help to activate the sticking agent;
- Please don't stretch the sticker;
- Sticker can be re-applied as many times as needed to get best results;
- Please make sure that no airbubbles form under the sticker;
- To prevent airbubbles from forming we recommend applying gentle pressure along the sticker while making the final application.

### **Application:**

- 1) Using provided alcohol pads, degrease the surface of each frame including the edges and countersunk and threaded axle holes and let the surface dry,
- 2) We recommend to gently remove the complete sticker from the unsticky part avoiding touching the sticky layer with fingers and gently apply the sticker to the corresponding frame surface without applying pressure until you find the perfect position. Stickers are cut to frame size and shape but are approximately 0.5-0.7mm smaller than the frame surface. So to position the sticker optimally please leave a 0.5-1mm margin between sticker and frame edges as shown on the picture:



- 3) We recommend screwing in the axles gently to help the sticker application in countersunk areas.
- 4) For the side with threaded holes we also recommend to screw the axles in as shown on the picture:



5) Well done! You rock!

The final result should look like this:



Frame is ready to rock right away. If you have any questions, feel free to contact us: [contact@rockinframes.com](mailto:contact@rockinframes.com)